

*Dressing-up your Exterior & Interior*





*Dressing-up your Exterior & Interior*





# Introduction

Alucopanel Industries Introduced itself for a rapid growth of the construction industry in 2002 and the evolving of new Skyline in the construction field as well as creation of stunning and modern structures, Aluco group with decades of expertise and association with the construction world took the giant leap towards the industry and in 2002 a new venture of Aluminium Composite Materials was evolved.

**Alucopanel Industries provides you the opportunity to embellish your building's exteriors and interiors.**

It can be used in the design and development of building facades, facia, and individual signage, partitioning panels, interior cladding, ceiling, furniture (Household & Office),elevators, escalators, stair sideways, canopy, automobile sector and column cover. Alucopanel offers its customers an unlimited range of colours and designs and tailor made sizes.

Since we have the state of the art manufacturing facility approved by Uttarakhand Govt. Approved industrial town located at Roorkee, Which is equipped with the latest technologically advanced manufacturing plants.



## Our Vision

To be an admirable brand in the ACP industry offering value for money cladding solutions. With our quality and consistency, culture of smart solutions and innovations, We aspire to be the finest company to work with.

## Approach

With a strong pedigree of Alucopanel is a process driven organization with multiple quality check points in order to meet the stringent customer requirements. The organization culture and values at Alucopanel work relentlessly to achieve nothing less than customer delight.



## CERTIFICATION





## PRODUCT DIMENSIONS :

Standard Size	1220mm x 2440mm 1220mm x 3050mm 1220mm x 3660mm
Aluminium Skin Thickness	0.25mm to 0.5mm
Thickness	3mm to 4mm
Alloy	1100mm to 3003mm

\*\* Customized Dimensions & Shades can be provided on special request.

## PRODUCT TOLERANCE :

Thickness :  $\pm 0.2\text{mm}$

Width :  $\pm 2\text{mm}$

Bow : Max. 0.5%

## SALIENT FEATURES

- Green Product
- Fire Resistant
- Weather Proof
- Light Weight
- Uniform Colour
- Easy to Install
- Sound & Thermal Resistant
- Water Chemical & Corrosion Resistant
- Excellent Flatness
- High Impact Resistant
- Easy to Clean
- Termite Resistant



# Sand

SERIES

LUXURIOUS  
ASSORTMENT



Explore the material's own  
*Expressive*  
Surface



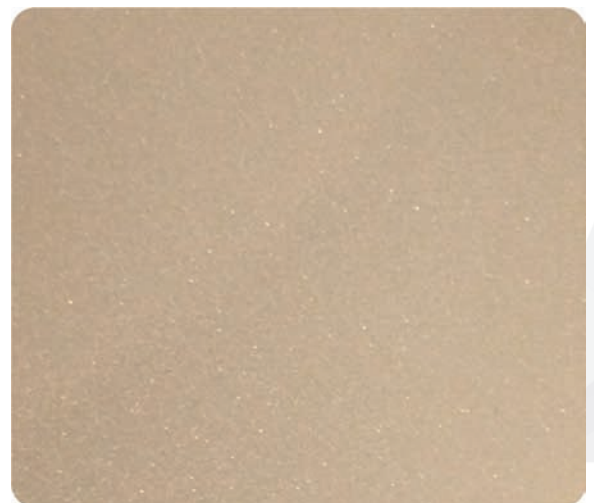
SN-01 RUSTIC SAND



SN-02 IVORY SAND



SN-03 SHADOW GRAY SAND



SN-04 MULTANI MAGIC SAND

PERAL  
*Series*

  
alomax®

*Exceptional*  
& LUXURY





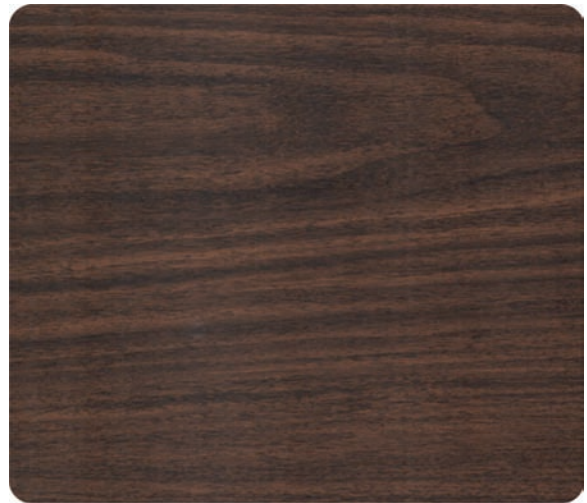
WP-18 AMERICAN MAHOGANY



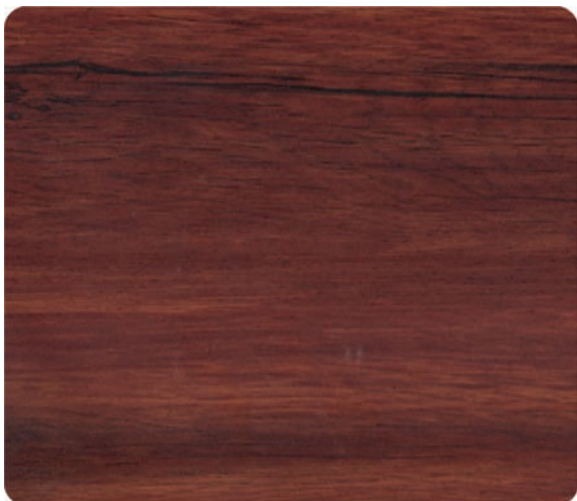
WP-19 ARIZON OAK



WP-20 NYANA TEAK



WP-24 AMERICAN SMOKE



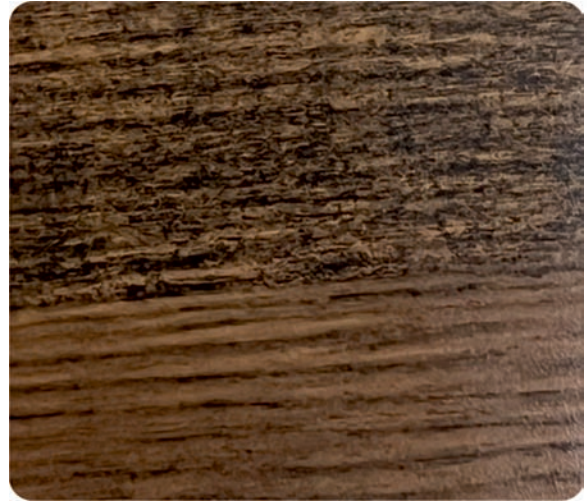
WP-25 ROSE WOOD



WP-26 KNOTE PIE WOOD



WP-27 CLASSIC MAPLE



WP-28 AFRICAN WOOD



WP-33 JURASIC MACASSAR



WP-34 ORCHARD DELIGHT



WP-35 KARA WOOD



WP-21 ELANTRA GREYISH OAK



NOSTALGIC  
*Brilliance*



WP-22 ELANTRA BROWNISH OAK



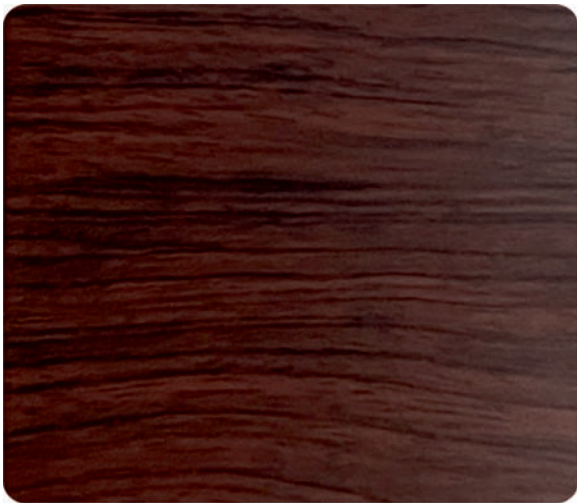
WP-23 ZEBRANO



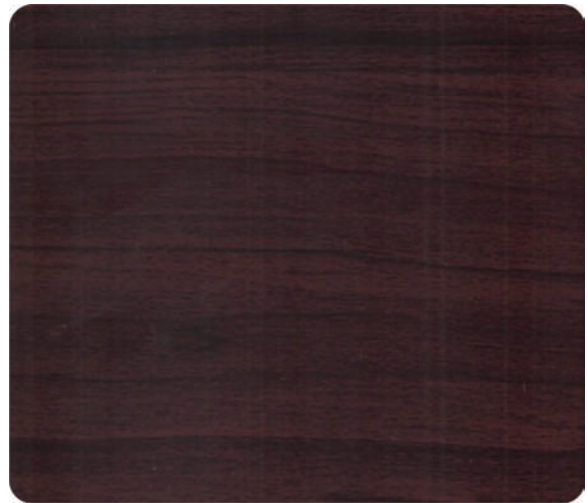
WP-05 OAK WOOD



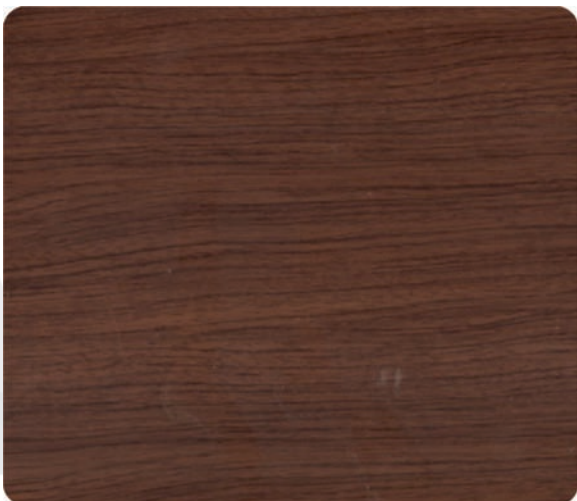
WP-06 CROWN SAPELI



WP-03 MAHAGONY



WP-16 RED CHERRY



WP-15 AMERICAN WALNUT



WP-01 WALNUT



  
alomax®

EXTREMELY  
*Aesthetic*



Aluminium Surface  
3003 ALLOY

  
alomax®

PERAL  
*Series*



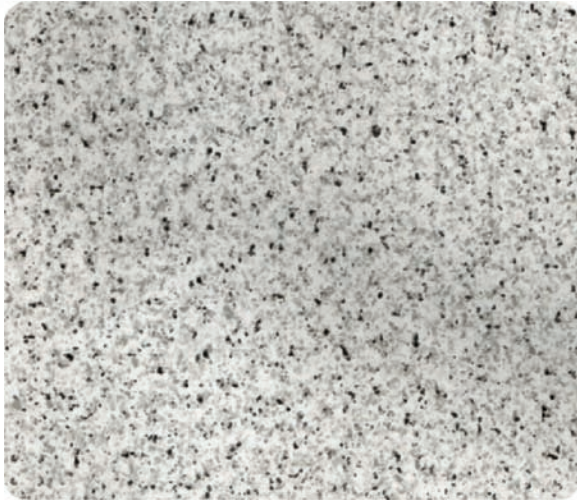
*Adding*  
BEAUTY



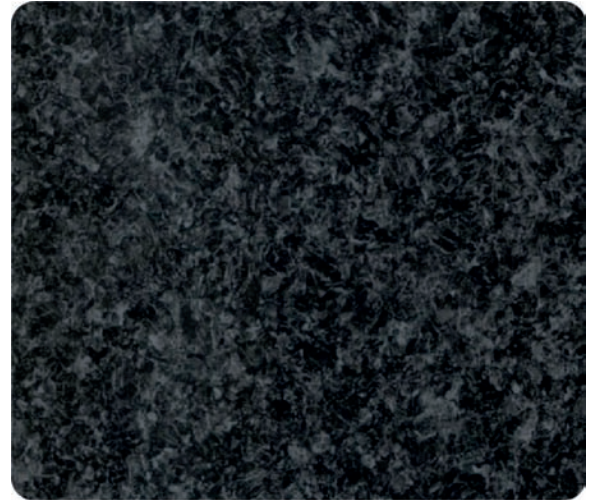
GB-02 BLACK GALAXY



GB-01 WHITE GALAXY



MP-05 KASHMIR WHITE



MP-03 REGAL BLACK



WP-17 ZEBRA WOOD



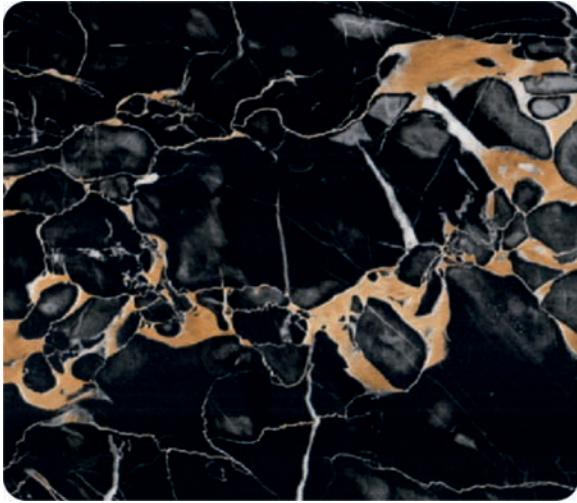
MP-04 DARK EMPRADOR



MP-01 SATVARIO



MP-02 BEIGE TRAVETINE



MP-06 GOLDEN PORTORO



MP-07 TIGER ONYX



MP-08 VOLCANO ONYX



MP-09 RED COPPER STONE

# Magnificent MOTIFS



MP-10 CHALK GRAY STONE



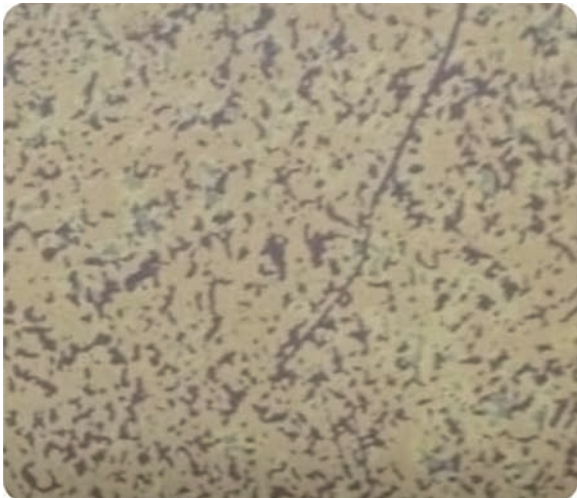




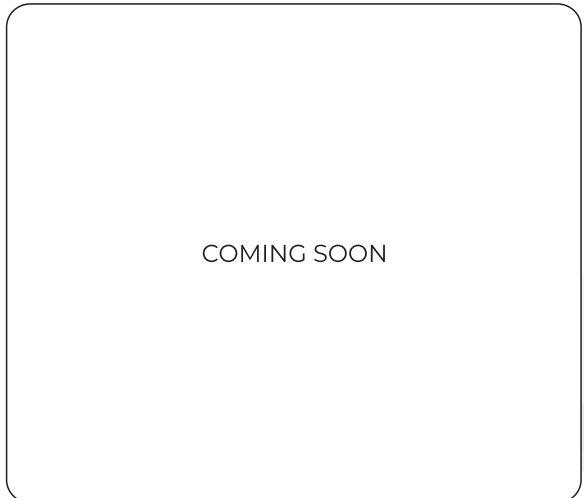
Aluminium Surface  
3003 ALLOY



BEGUILING  
*Danache*



MP-11 TULIP STONE



COMING SOON

EXOTICA  
*Series*

  
alomax®

SWAY OF  
*Elegance*



AM-01 EXOTIC SILVER

★ ★ ★



AM-02 SILVER GREY

★ ★



SP-01 BRUSH SILVER

★ ★



AM-14 SPARKLING GREY

★



AM-11 BLACK SILVER

★ ★ ★



AM-103 DARK GREY

★ ★



AM-03 CHAMPAGNE SILVER

★



AM-05 CHAMPAGNE GOLD

★ ★



AM-122 BRONZE

★ ★



AM-07 SHINING GOLD

★ ★ ★



AM-19 COPPER GOLD



AM-06 COPPER



AM-12 PEARL COPPER



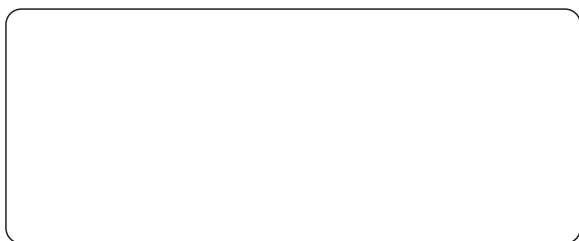
AM-124 MEHROON



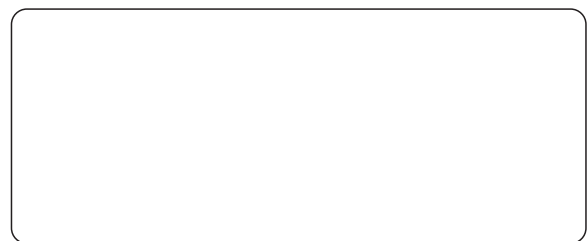
AM-115 BANNER RED



AM-123 COFFEE BROWN



AM-127 ICE WHITE



AM-101 WHITE



AM-117 MILKY WHITE



AM-112 APRICOT





AM-109 LEMON YELLOW



AM-106 TRAFFIC YELLOW



AM-110 ORANGE



AM-111 RED



AM-126 ICE RED



SP-03 SILVER MIRROR



SP-04 GOLD MIRROR



SP-09 COPPER MIRROR



AM-08 SILVER BLUE



AM-113 SKY BLUE



EXOTICA  
*Series*

  
alomax®



TEMPTING  
*Modishness*



AM-107 SIGNAL BLUE

★★



AM-104 DEEP BLUE

★★★



AM-121 FINLAND GREEN

★★



AM-108 GRASS GREEN

★



AM-125 PARROT GREEN

★



AM-114 CNG GREEN

★★



AM-128 ICE BLACK

★★



AM-102 BLACK

★★★



AM-129 BARBIE PINK

★



AM-130 PURPLE

★

# FIRE WALL



## FIRE Grade ACP

**Fire-retardant (FR)** materials have become an important ingredient in modern construction. With more and more skyscrapers towering towards the skies in bustling cities, fire protection has taken centre stage across the world. Using genuine FR material is critical to safety in the Fire Rated Construction System.

A typical ACP-cladded façade in India has a frame structure comprising a non-load-bearing brick wall, followed by plaster, steel frame and an ACP envelope fixed on the frame. As an important criterion for resistance to fire, the ACP envelope should contain fire and retain its structural integrity up to 2 hours. But that's not the only feature that contributes to fire protection. An authentic rating for resistance to fire also takes into account that smoke kills faster than fire, among other vital factors. This is where Alomax's FR ACP, Firewall stands above the rest.

### The State-of-the-art FR Grade ACP Production Unit

At Alomax the end-to-end production facility is foolproof and competes with global standards. The Three production units spread over 25,000 sqm. At Bhagwanpur Rorkee are equipped with up-to-date technology and testing facilities. The stringent quality control system keeps a sharp eye on each and every unit produced.

Core details	Polyethylene	Magnesium hydroxide (MDH)	Aluminium trihydrate (ATH)
Chemical reaction	$\text{CH}_2 + \text{O}_2 = \text{CO}_2 + \text{H}_2\text{O}$	$\text{Mg}(\text{OH})_2 = \text{MgO} + \text{H}_2\text{O}$	$2\text{Al}(\text{OH})_3 = \text{Al}_2\text{O}_3 + 3\text{H}_2\text{O}$
Decomposition temperature	90oC to 110oC	310oC to 360oC	190oC to 240oC
Status	Heat generation	Heat absorption	Heat absorption

[www.alomaxacp.com](http://www.alomaxacp.com)

# FIRE WALL



# FIRE WALL



## The Core Secret

**Firewall is a non-halogenated FR material that produces water vapour when it heats up.**

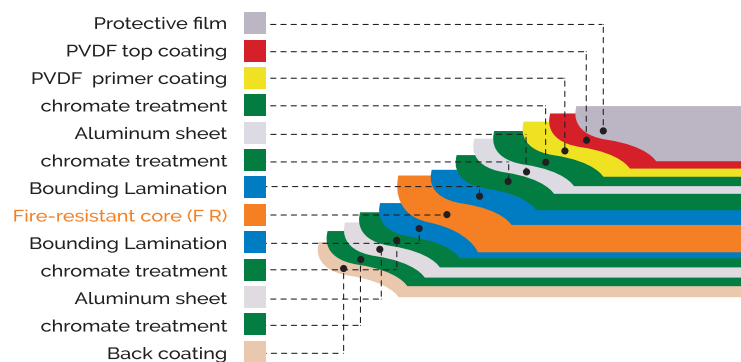
It does not produce toxic gases like the halogenated materials. Magnesium hydroxide (MDH) is the non-halogenated material that is mixed with PE to form the core of Alomax's FR products. MDH has a better fire-resistance performance than aluminium trihydrate (ATH), the other non-halogenated material, owing to higher decomposition temperature. Furthermore MDH is more environment-friendly than other similar materials.

MDH delays the PE transformation from solid to plastic (the point of ignition) up to 360°C, by releasing water molecules and bringing down the temperature continuously.



**STOPS  
Flames  
Smoke  
Toxic Gas**

## Fireproof ACP Structure



## The Trusted Choice

**Alomax Firewall** having more than 71% mineral content and made with AA5005/AA3105 alloy, is a tried and tested non-halogenated FR ACP which ...

- Will not produce toxic gases that cause death. 80% of death in a fire accident is caused by smoke which is a dreadful combination of CO and CO<sub>2</sub>. The haemoglobin in our blood loves carbon monoxide much more than oxygen.
- Will not blur vision and thus make it easy for people to get out via the escape routes.
- Will not release excessive heat onto other materials that can cause fire.
- Will not contribute to rapid spreading of flames towards the upper floors of the building, for 2 hours, as an exterior cladding of a typical Indian construction.
- Will not melt into flaming droplets and instead turn into innocuous dust particles.
- Will not come off the façade when the building is doused with water through fire hose.

## Product Certification & Reports

Alomax Firewall is process certified for Reaction to Fire by ewcl5 as per EN 13501-1, Class B-s1, d0 and BS 476 Part 6 and 7.

Alomax Firewall also passed the ASTM E119-12 test for 2-hour resistance to fire. The test also checks if the ACP disintegrates from the structure when water is sprayed through fire hoses to bring the fire under control.

EN 13501-1 test validates that it will not contribute to the spreading of fire; that smoke production will be negligible and flaming droplets will turn to harmless ash particles. On clearing this test Alomax Firewall has received the B-s1, d0 fire classification.



## Our Prestigious Clients





**BUILT FOR THE BETTER**





  Alomaxindia



### Marketing Network :

- Ahmedabad • Bangalore • Bhubaneswar • Chennai
- Cochin • Delhi • Dehradun • Hyderabad • Indore
- J&K • Imphal • Guawahti • Surat • Hissar • Jaipur
- Kolkata • Lucknow • Mumbai • Noida • Patna
- Pune • Raipur • Ranchi • Zirakpur



## ALUCOPANEL INDUSTRIES

### HEAD OFFICE :




**Alomax**, E-4, Mansarover Garden,  
New Delhi – 110015

### PLANT :

Plot No. 304-310, Lakeshwari Industrial Area  
Bhagwanpur, Roorkee, Uttarakhand

Authorised Dealer



 +91 99991 91968, +91 99991 91969  
 info@alomaxcp.com, alomax2007@gmail.com  
 www.alomaxcp.com